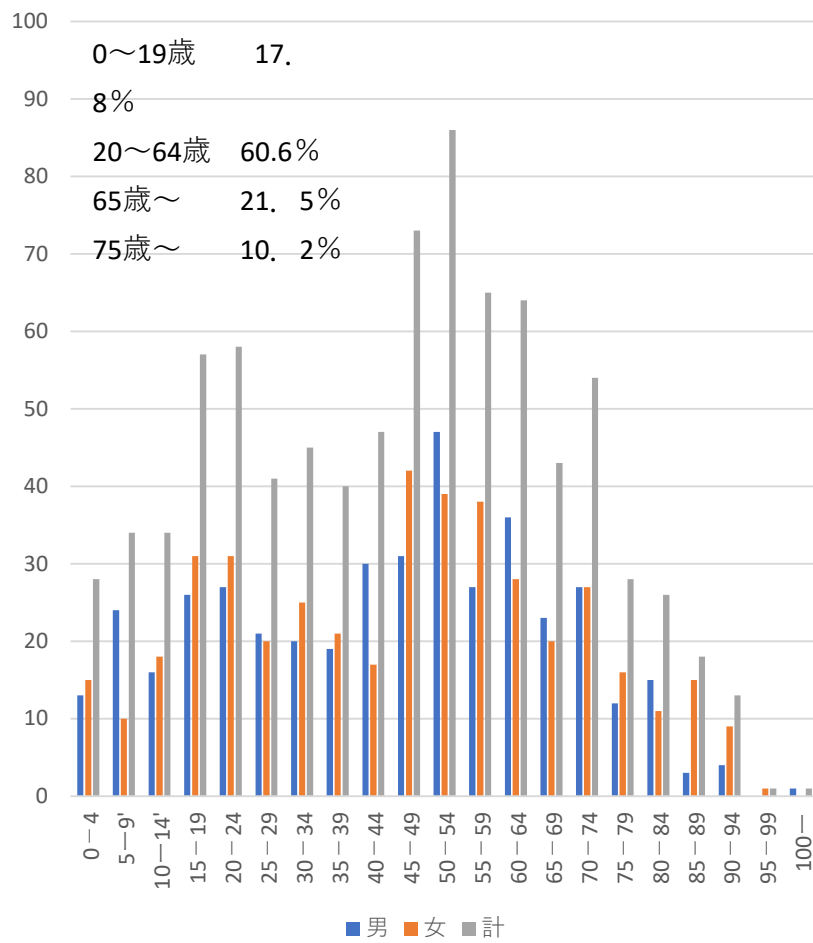


| 7丁目 | | | |
|--------|------|------|-----|
| 年齢 | 男 | 女 | 計 |
| 0-4 | 13 | 15 | 28 |
| 5-9' | 24 | 10 | 34 |
| 10-14' | 16 | 18 | 34 |
| 15-19 | 26 | 31 | 57 |
| 20-24 | 27 | 31 | 58 |
| 25-29 | 21 | 20 | 41 |
| 30-34 | 20 | 25 | 45 |
| 35-39 | 19 | 21 | 40 |
| 40-44 | 30 | 17 | 47 |
| 45-49 | 31 | 42 | 73 |
| 50-54 | 47 | 39 | 86 |
| 55-59 | 27 | 38 | 65 |
| 60-64 | 36 | 28 | 64 |
| 65-69 | 23 | 20 | 43 |
| 70-74 | 27 | 27 | 54 |
| 75-79 | 12 | 16 | 28 |
| 80-84 | 15 | 11 | 26 |
| 85-89 | 3 | 15 | 18 |
| 90-94 | 4 | 9 | 13 |
| 95-99 | 0 | 1 | 1 |
| 100- | 1 | 0 | 1 |
| 計 | 422 | 434 | 856 |
| % | 49.3 | 50.7 | 100 |

| 年 | ～19歳 | 20-64歳 | 65歳～ |
|------|------|--------|------|
| 2014 | 21.0 | 60.3 | 18.7 |
| 2015 | 20.5 | 59.4 | 20.1 |
| 2016 | 20.4 | 59.2 | 20.4 |
| 2017 | 20.6 | 58.7 | 20.7 |
| 2018 | 19.1 | 59.6 | 21.3 |
| 2019 | 17.4 | 60.9 | 21.7 |
| 2020 | 17.8 | 60.6 | 21.5 |

緑園7丁目人口構成 2020年3月



年齢構成の推移

